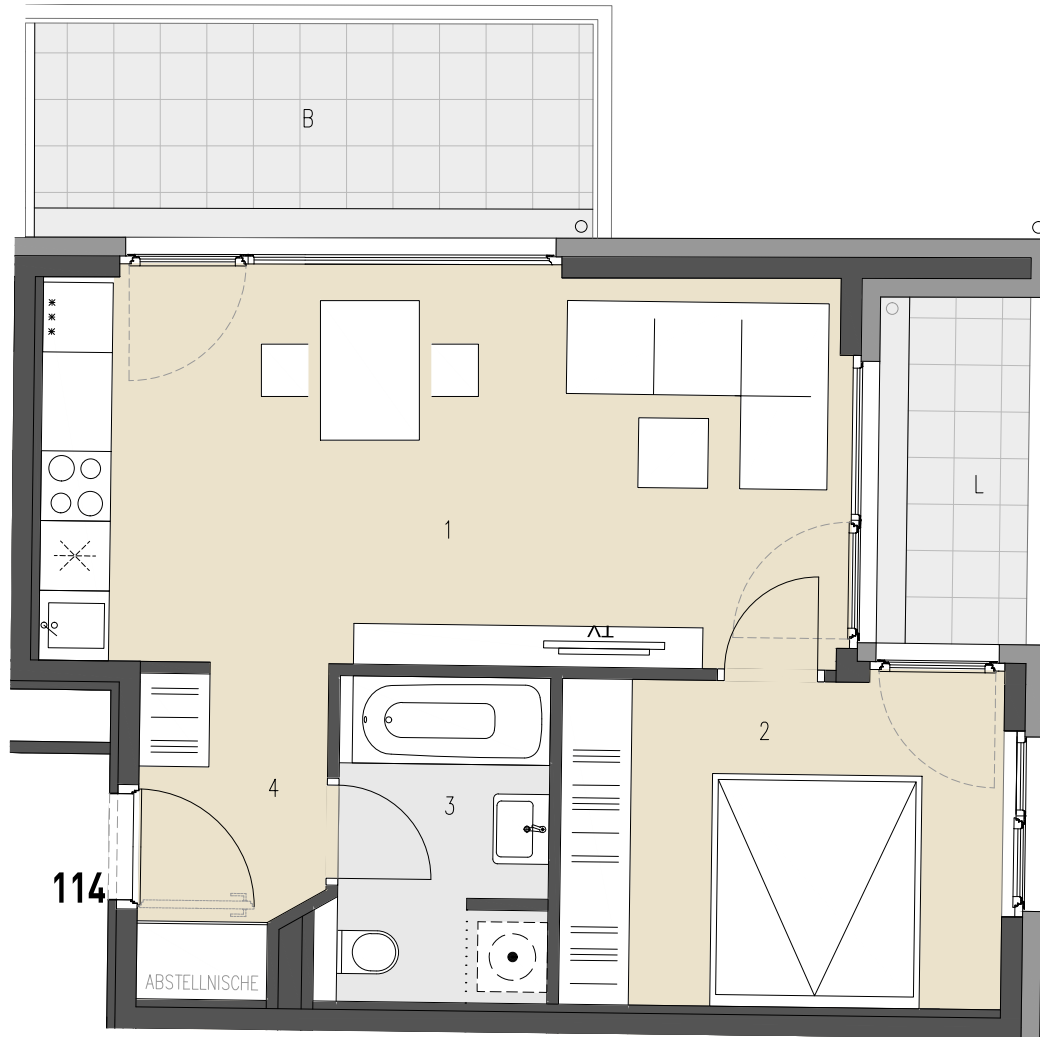


JOSEF-RUSTON-GASSE 28, 1210 WIEN

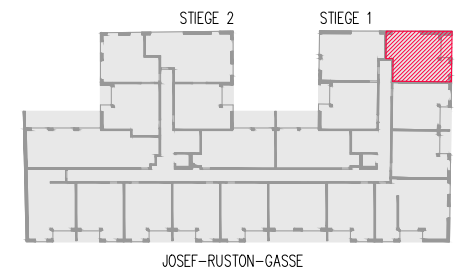
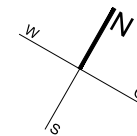
TOP 114 OBERGESCHOSS

WOHNFLÄCHE ca. 42,72 m²
 LOGGIA ca. 3,85 m²
 BALKON ca. 8,83 m²

1	WOHNKÜCHE	22,85 m ²
2	ZIMMER	10,64 m ²
3	BAD+WC	5,00 m ²
4	VORRAM	4,23 m ²
L	LOGGIA	3,88 m ²
B	BALKON	8,83 m ²



114



ÜBERSICHT - GRUNDRISS