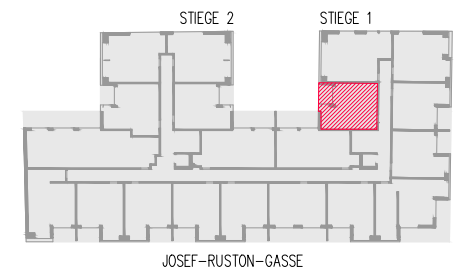
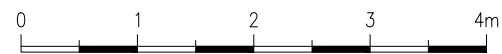
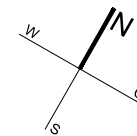
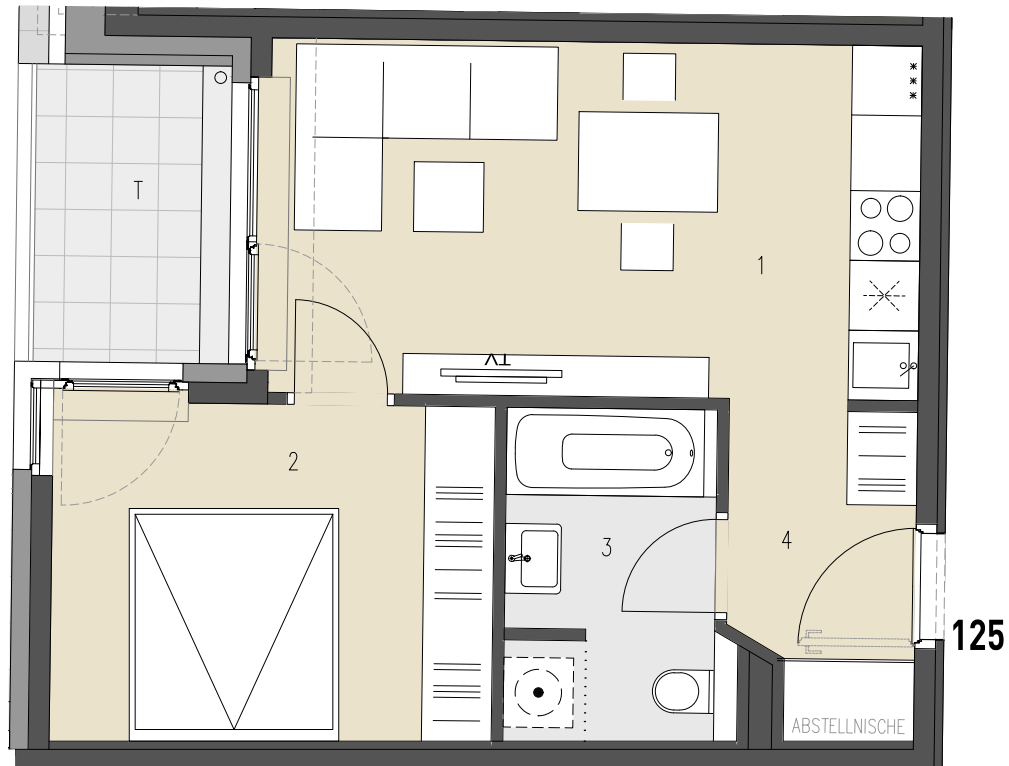


JOSEF-RUSTON-GASSE 28, 1210 WIEN

**TOP 125** 1. DACHGESCHOSS

WOHNFLÄCHE ca. 37,44 m<sup>2</sup>  
TERRASSE ca. 4,30 m<sup>2</sup>

1	WOHNKÜCHE	17,05 m <sup>2</sup>
2	ZIMMER	11,01 m <sup>2</sup>
3	BAD+WC	5,11 m <sup>2</sup>
4	VORRAM	4,27 m <sup>2</sup>
T	TERRASSE	4,30 m <sup>2</sup>



ÜBERSICHT - GRUNDRISS