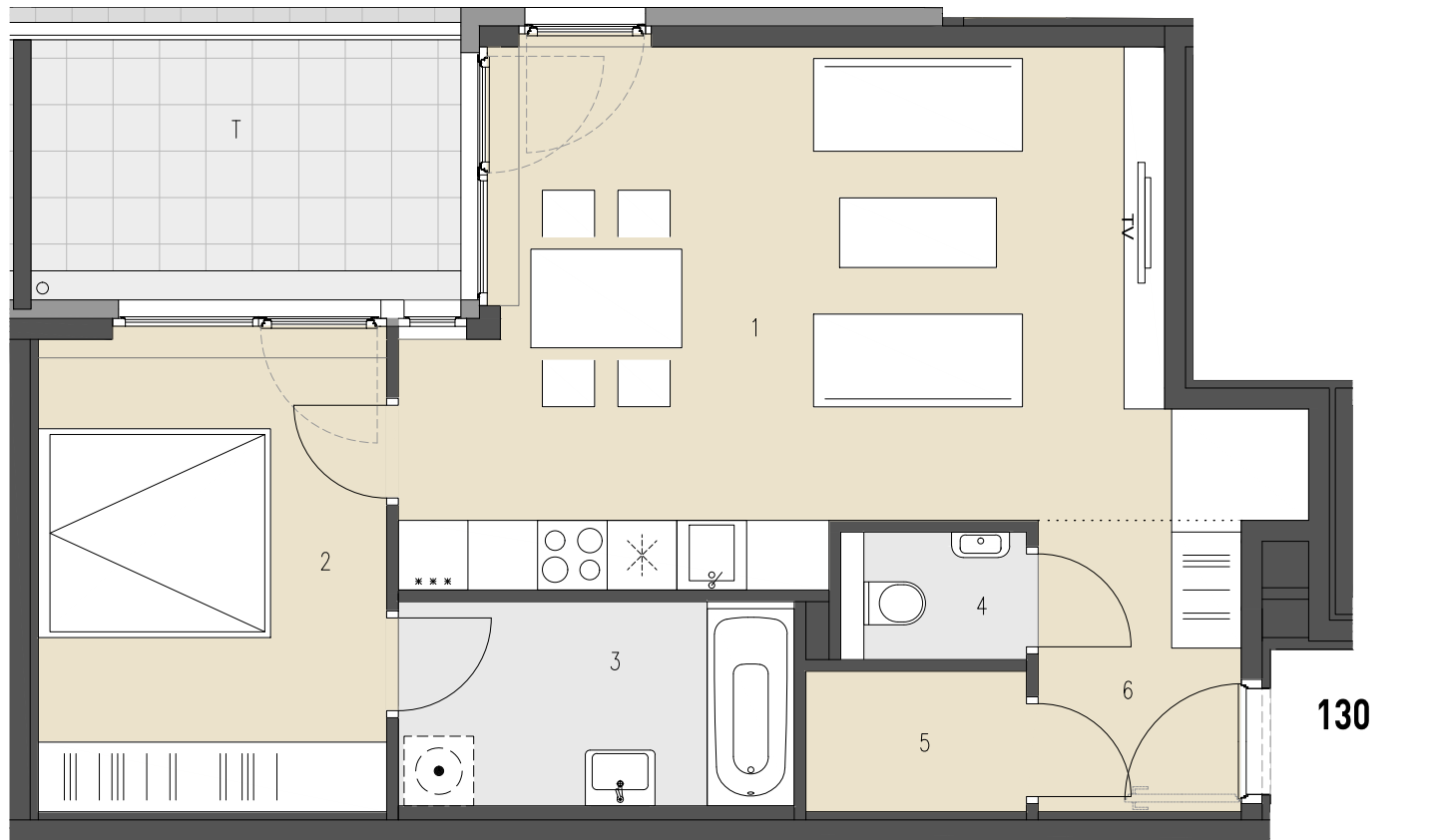


JOSEF-RUSTON-GASSE 28, 1210 WIEN

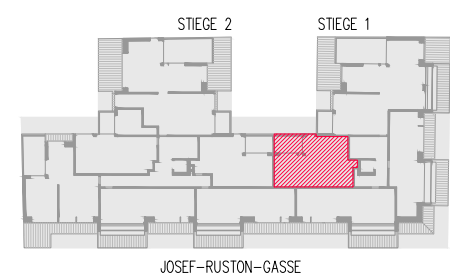
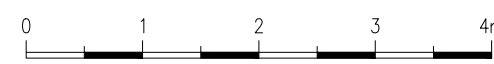
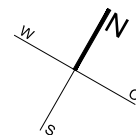
**TOP 130** 2. DACHGESCHOSS

WOHNFLÄCHE ca. 54,58 m<sup>2</sup>  
TERRASSE ca. 8,30 m<sup>2</sup>

1	WOHNKÜCHE	28,13 m <sup>2</sup>
2	ZIMMER	12,21 m <sup>2</sup>
3	BAD	6,00 m <sup>2</sup>
4	WC	1,54 m <sup>2</sup>
5	AR	2,30 m <sup>2</sup>
6	VORRAUM	4,39 m <sup>2</sup>
T	TERRASSE	8,30 m <sup>2</sup>



**130**



ÜBERSICHT - GRUNDRISS