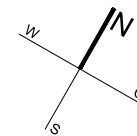
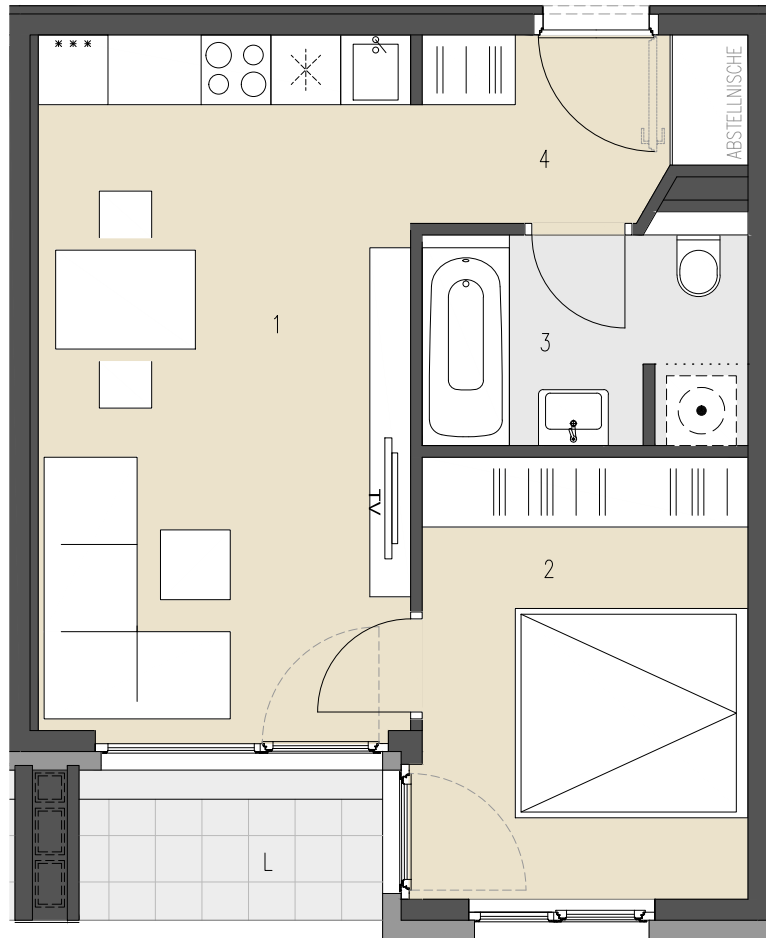


**210**

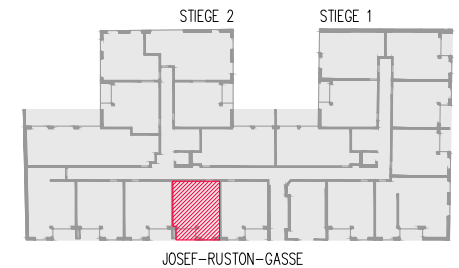


JOSEF-RUSTON-GASSE 28, 1210 WIEN

**TOP 210** ERDGESCHOSS

WOHNFLÄCHE ca. 39,01 m<sup>2</sup>  
LOGGIA ca. 3,37 m<sup>2</sup>

1	WOHNKÜCHE	19,14 m <sup>2</sup>
2	ZIMMER	10,64 m <sup>2</sup>
3	BAD+WC	5,00 m <sup>2</sup>
4	VORRAUM	4,23 m <sup>2</sup>
L	LOGGIA	3,37 m <sup>2</sup>



ÜBERSICHT - GRUNDRISS