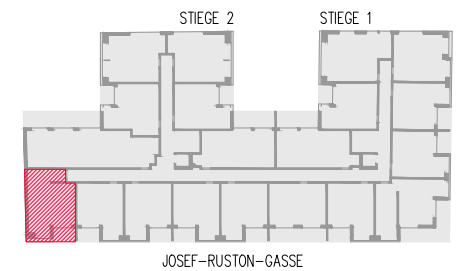
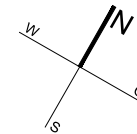
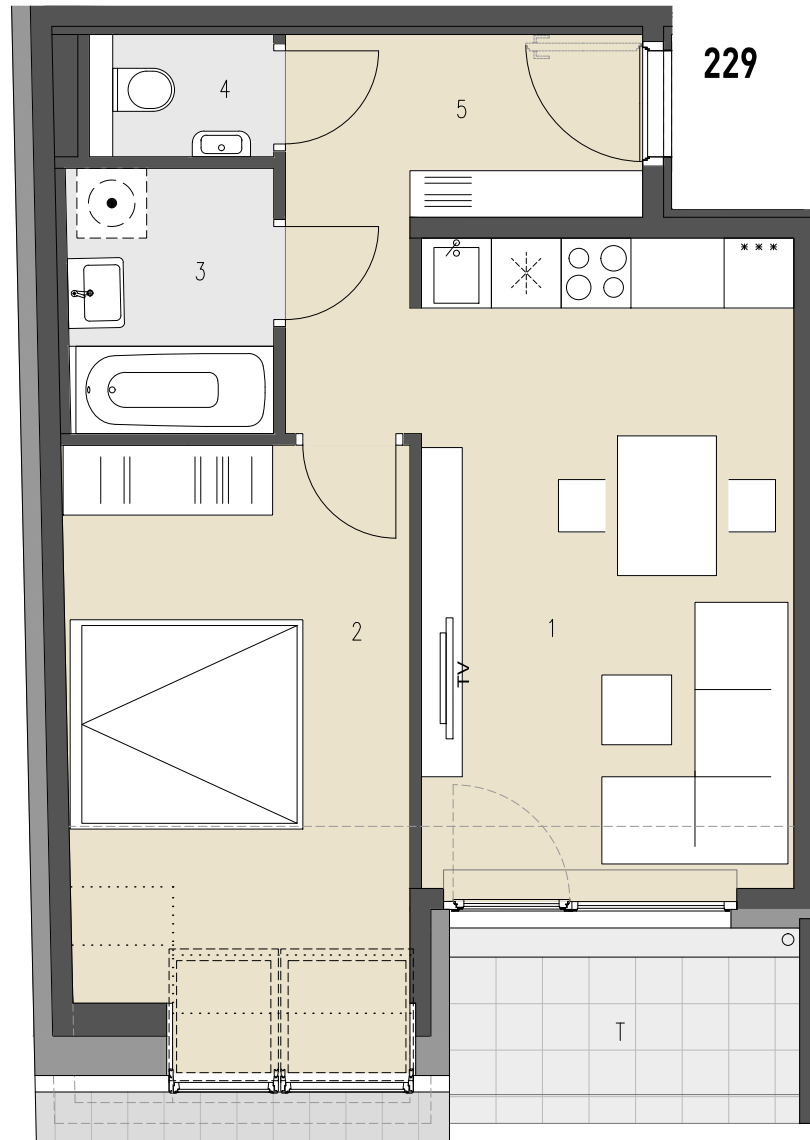


JOSEF-RUSTON-GASSE 28, 1210 WIEN

**TOP 229** 1. DACHGESCHOSS

WOHNFLÄCHE ca. 46,89 m<sup>2</sup>  
TERRASSE ca. 5,06 m<sup>2</sup>

1	WOHNKÜCHE	17,89 m <sup>2</sup>
2	ZIMMER	16,60 m <sup>2</sup>
3	BAD	4,03 m <sup>2</sup>
4	WC	1,45 m <sup>2</sup>
5	VR	6,92 m <sup>2</sup>
T	TERRASSE	5,06 m <sup>2</sup>



ÜBERSICHT - GRUNDRISS