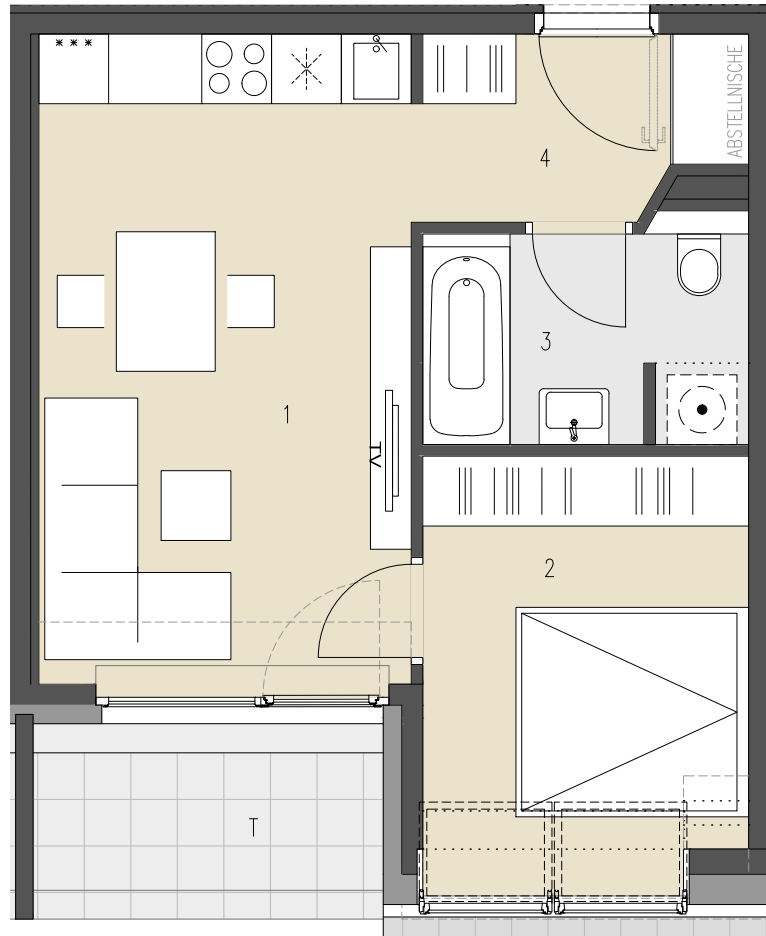


230

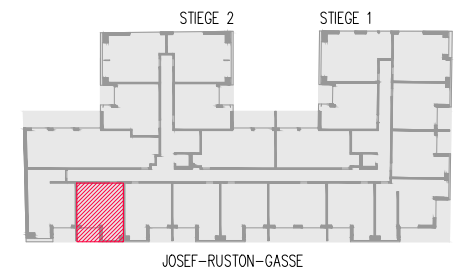
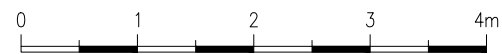
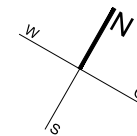


JOSEF-RUSTON-GASSE 28, 1210 WIEN

TOP 230 1. DACHGESCHOSS

WOHNFLÄCHE ca. 37,70 m²
TERRASSE ca. 5,06 m²

1	WOHNKÜCHE	17,89 m ²
2	ZIMMER	10,58 m ²
3	BAD+WC	5,00 m ²
4	VORRAUM	4,23 m ²
T	TERRASSE	5,06 m ²



ÜBERSICHT - GRUNDRISS