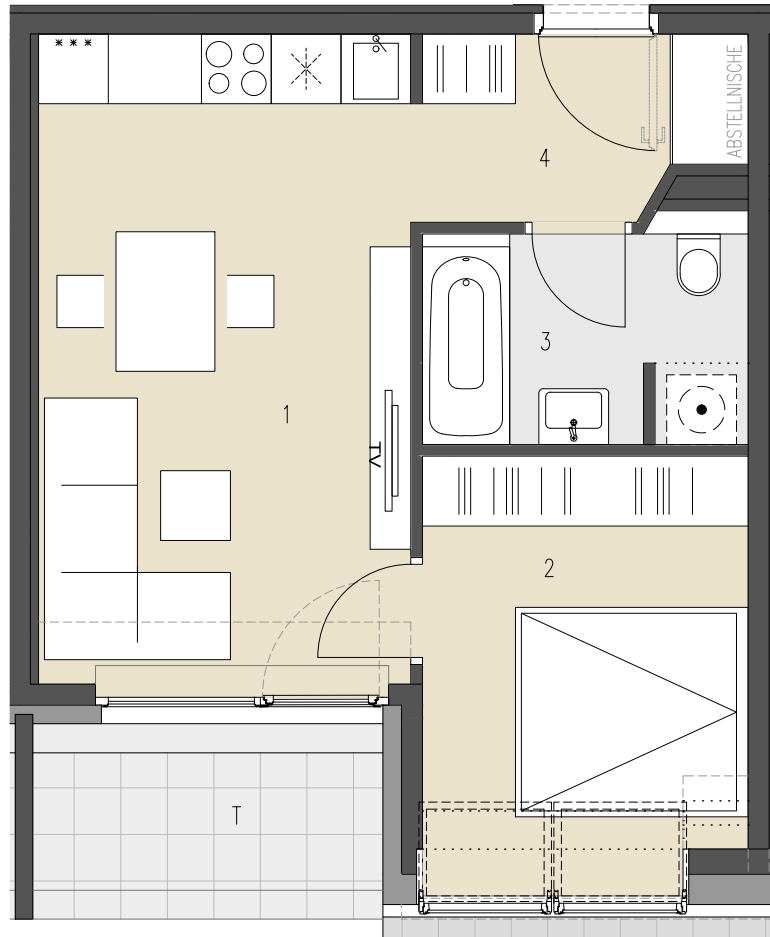


**232**

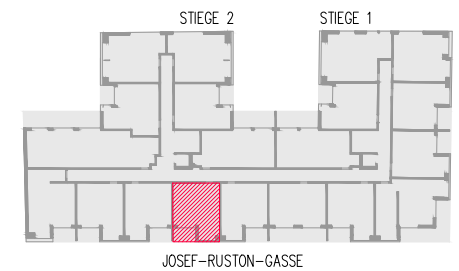
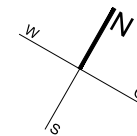


JOSEF-RUSTON-GASSE 28, 1210 WIEN

**TOP 232** 1. DACHGESCHOSS

WOHNFLÄCHE ca. 37,70 m<sup>2</sup>  
TERRASSE ca. 5,06 m<sup>2</sup>

1	WOHNKÜCHE	17,89 m <sup>2</sup>
2	ZIMMER	10,58 m <sup>2</sup>
3	BAD+WC	5,00 m <sup>2</sup>
4	VORRAUM	4,23 m <sup>2</sup>
T	TERRASSE	5,06 m <sup>2</sup>



ÜBERSICHT - GRUNDRISS