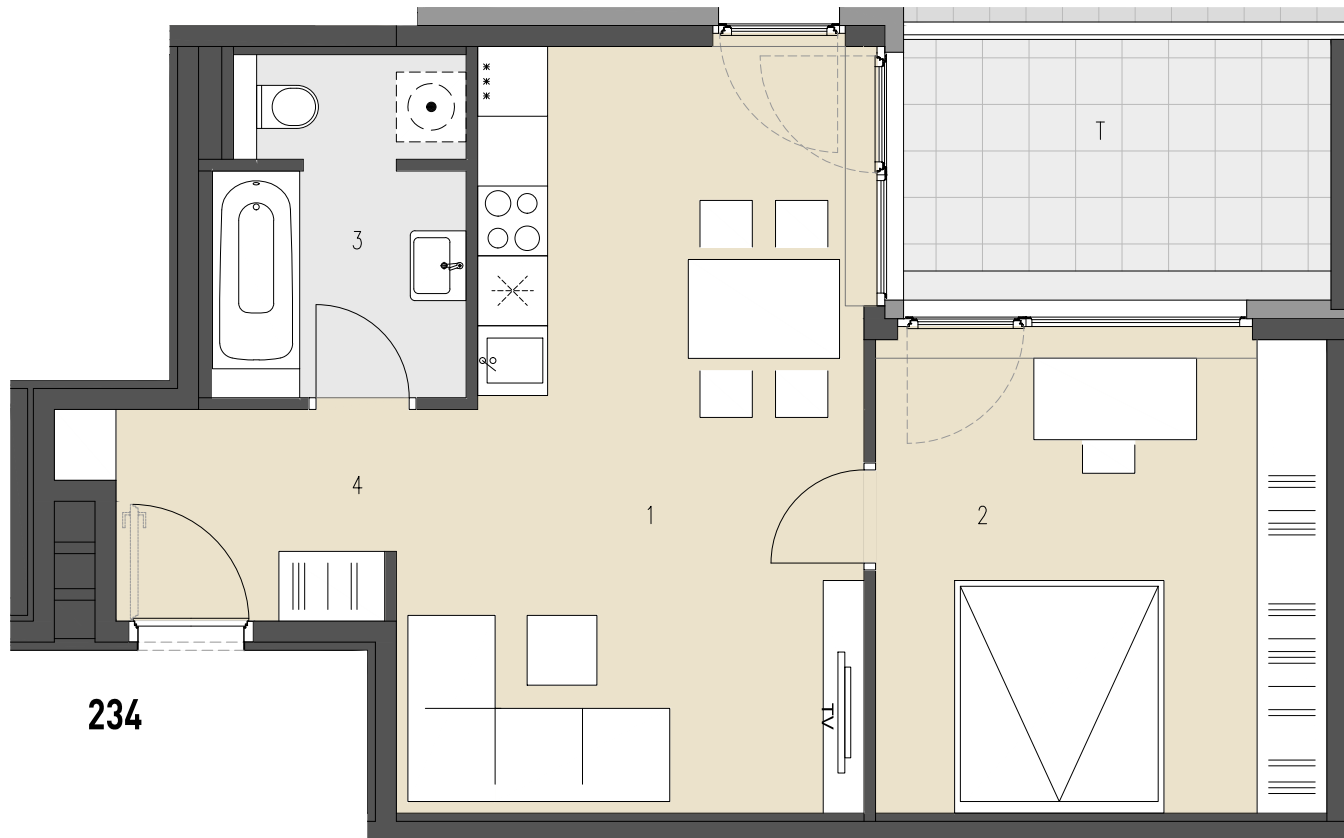


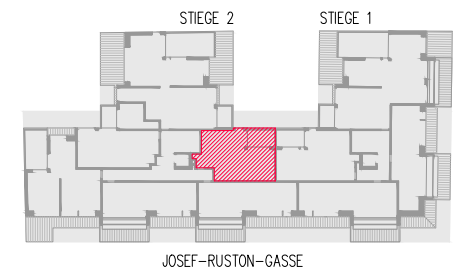
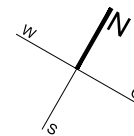
JOSEF-RUSTON-GASSE 28, 1210 WIEN

**TOP 234** 2. DACHGESCHOSS

WOHNFLÄCHE ca. 50,70 m<sup>2</sup>  
TERRASSE ca. 8,23 m<sup>2</sup>



1	WOHNKÜCHE	24,31 m <sup>2</sup>
2	ZIMMER	15,79 m <sup>2</sup>
3	BAD+WC	5,95 m <sup>2</sup>
4	VORRAUM	4,65 m <sup>2</sup>
T	TERRASSE	8,23 m <sup>2</sup>



ÜBERSICHT - GRUNDRISS