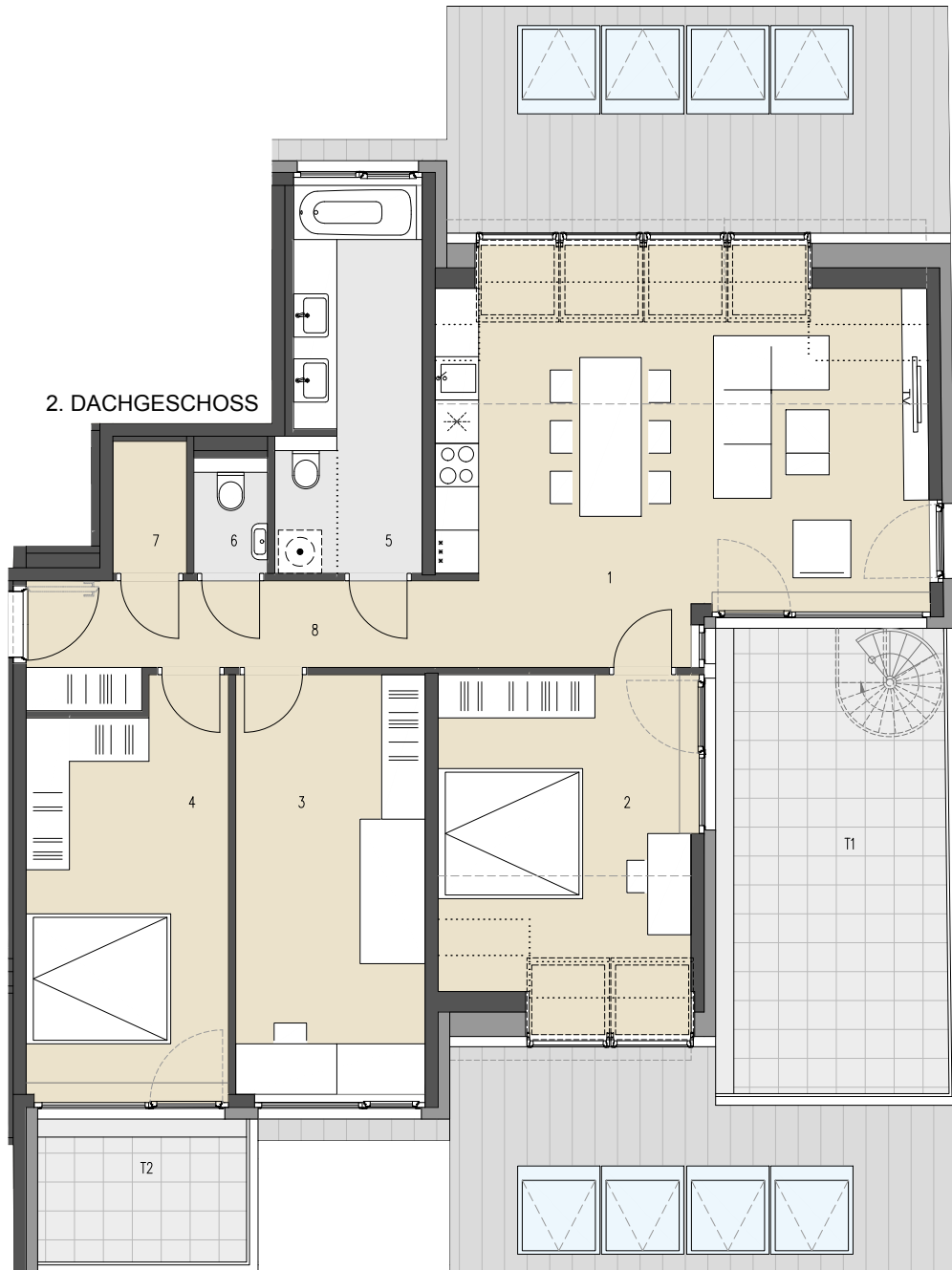
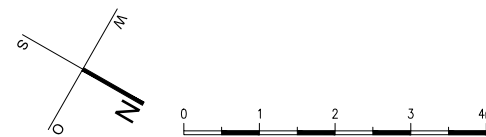
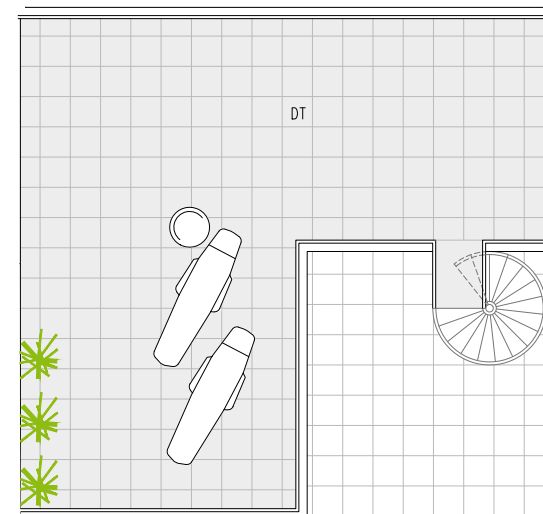


JOSEF-RUSTON-GASSE 28, 1210 WIEN



DACHTERRASSE

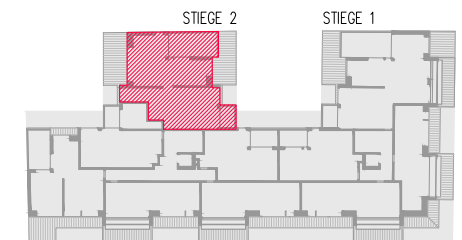


**TOP 235**

2. DACHGESCHOSS

WOHNFLÄCHE ca. 109,33 m<sup>2</sup>  
TERRASSE ca. 26,27 m<sup>2</sup>  
DACHTERRASSE ca. 33,24 m<sup>2</sup>

1	WOHNKÜCHE	39,31 m <sup>2</sup>
2	ZIMMER	18,68 m <sup>2</sup>
3	ZIMMER	15,22 m <sup>2</sup>
4	ZIMMER	15,25 m <sup>2</sup>
5	BAD	9,82 m <sup>2</sup>
6	WC	1,43 m <sup>2</sup>
7	AR	1,87 m <sup>2</sup>
8	VORRAUM	7,75 m <sup>2</sup>
T1	TERRASSE	20,55 m <sup>2</sup>
T2	TERRASSE	5,72 m <sup>2</sup>
DT	DACHTERRASSE	33,24 m <sup>2</sup>



JOSEF-RUSTON-GASSE

ÜBERSICHT - GRUNDRISS

