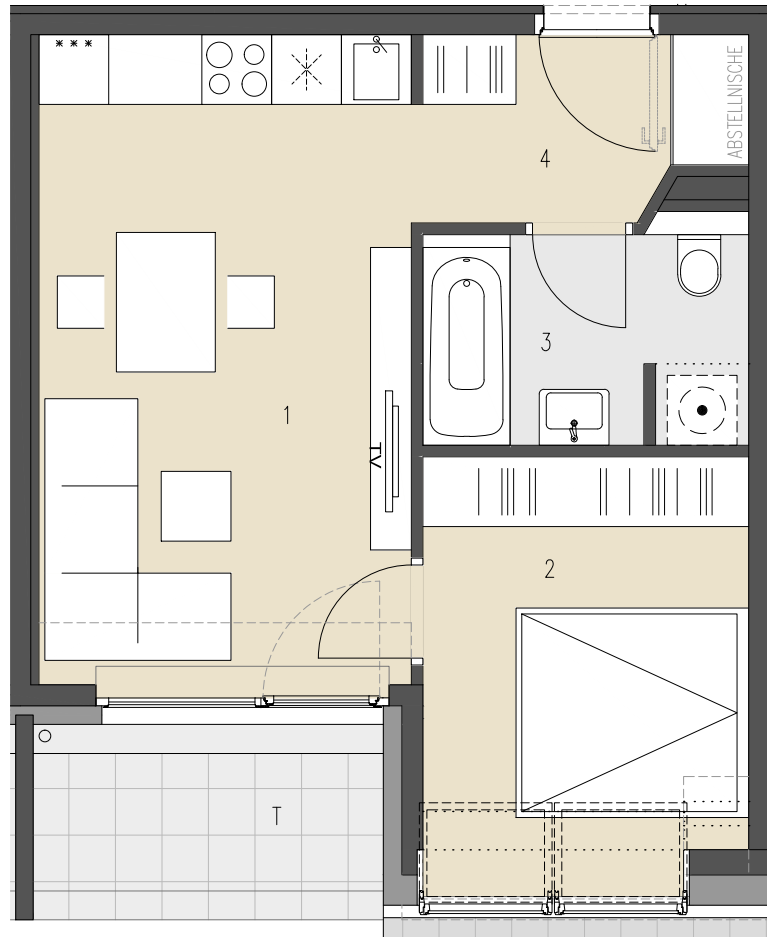


119

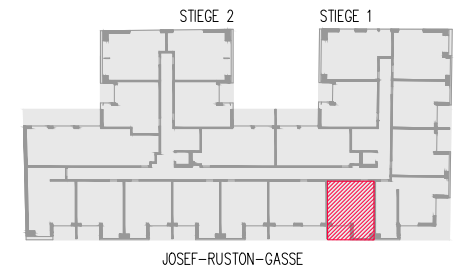
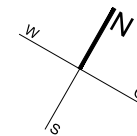


JOSEF-RUSTON-GASSE 28, 1210 WIEN

**TOP 119** 1. DACHGESCHOSS

WOHNFLÄCHE ca. 37,70 m<sup>2</sup>  
TERRASSE ca. 5,06 m<sup>2</sup>

|   |           |                      |
|---|-----------|----------------------|
| 1 | WOHNKÜCHE | 17,89 m <sup>2</sup> |
| 2 | ZIMMER    | 10,58 m <sup>2</sup> |
| 3 | BAD+WC    | 5,00 m <sup>2</sup>  |
| 4 | VORRAUM   | 4,23 m <sup>2</sup>  |
| T | TERRASSE  | 5,06 m <sup>2</sup>  |



ÜBERSICHT - GRUNDRISS