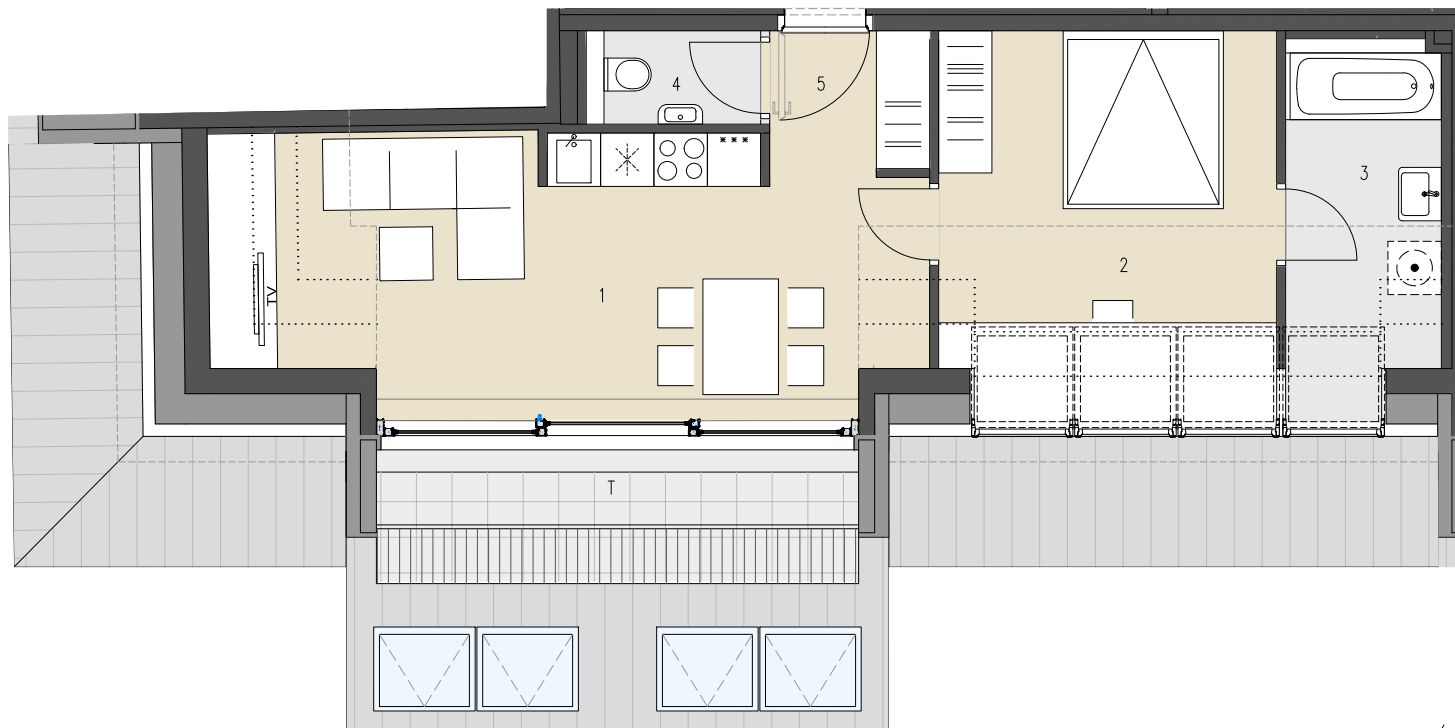


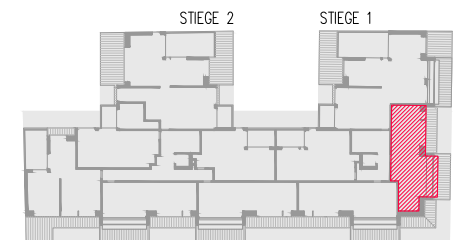
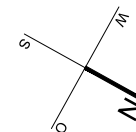
JOSEF-RUSTON-GASSE 28, 1210 WIEN



**TOP 128**      2. DACHGESCHOSS

WOHNFLÄCHE      ca. 60,46 m<sup>2</sup>  
TERRASSE      ca. 7,99 m<sup>2</sup>

1	WOHNKÜCHE	29,44 m <sup>2</sup>
2	ZIMMER	18,04 m <sup>2</sup>
3	BAD	8,12 m <sup>2</sup>
4	WC	1,95 m <sup>2</sup>
5	VORRAUM	2,91 m <sup>2</sup>
T	TERRASSE	7,99 m <sup>2</sup>



JOSEF-RUSTON-GASSE

ÜBERSICHT - GRUNDRISS

