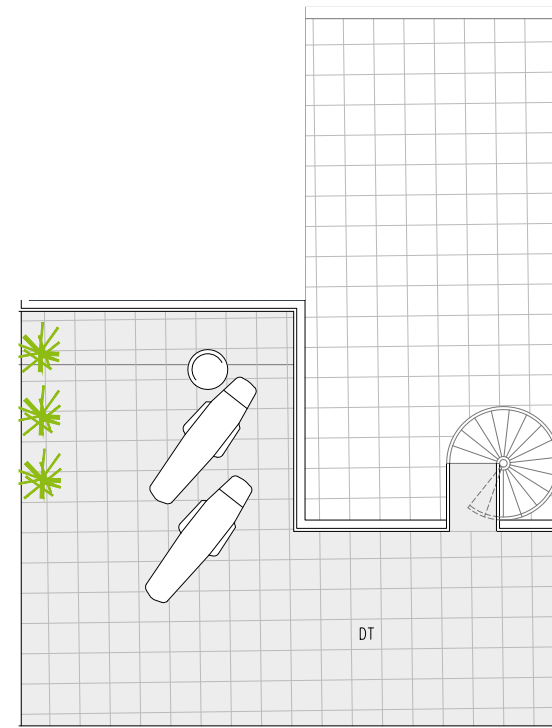
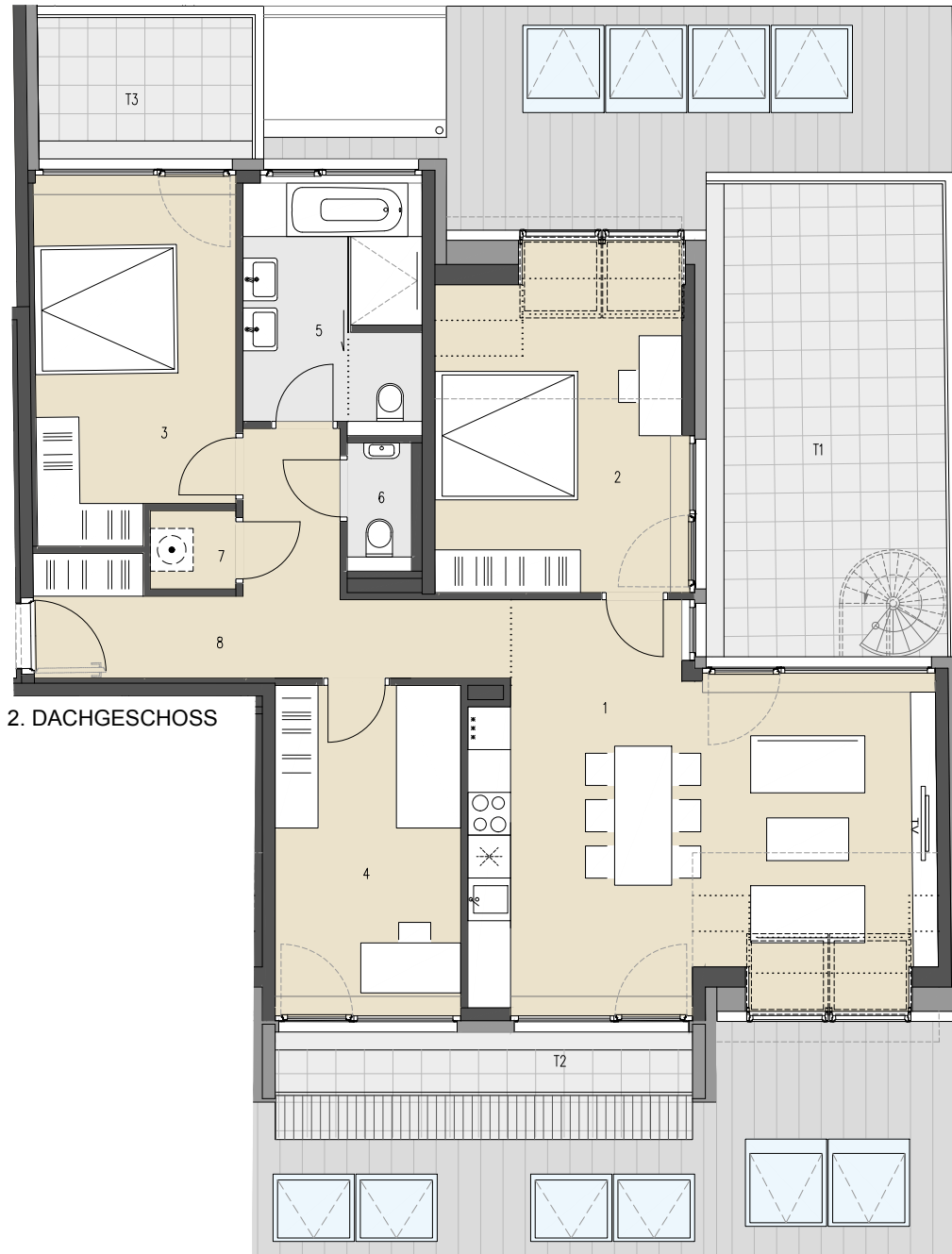


JOSEF-RUSTON-GASSE 28, 1210 WIEN

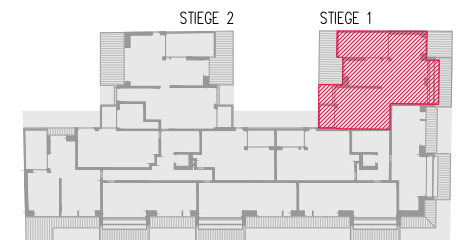
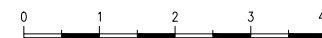
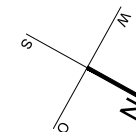
TOP 129 2. DACHGESCHOSS

WOHNFLÄCHE ca. 100,10 m²
TERRASSE ca. 36,79 m²
DACHTERRASSE ca. 28,89 m²

1	WOHNKÜCHE	33,87 m ²
2	ZIMMER	18,22 m ²
3	ZIMMER	13,53 m ²
4	ZIMMER	11,75 m ²
5	BAD	8,28 m ²
6	WC	1,44 m ²
7	AR	1,32 m ²
8	VORRAUM	11,69 m ²
T1	TERRASSE	22,22 m ²
T2	TERRASSE	8,63 m ²
T3	TERRASSE	5,94 m ²
DT	DACHTERRASSE	28,89 m ²



DACHTERRASSE



ÜBERSICHT - GRUNDRISS