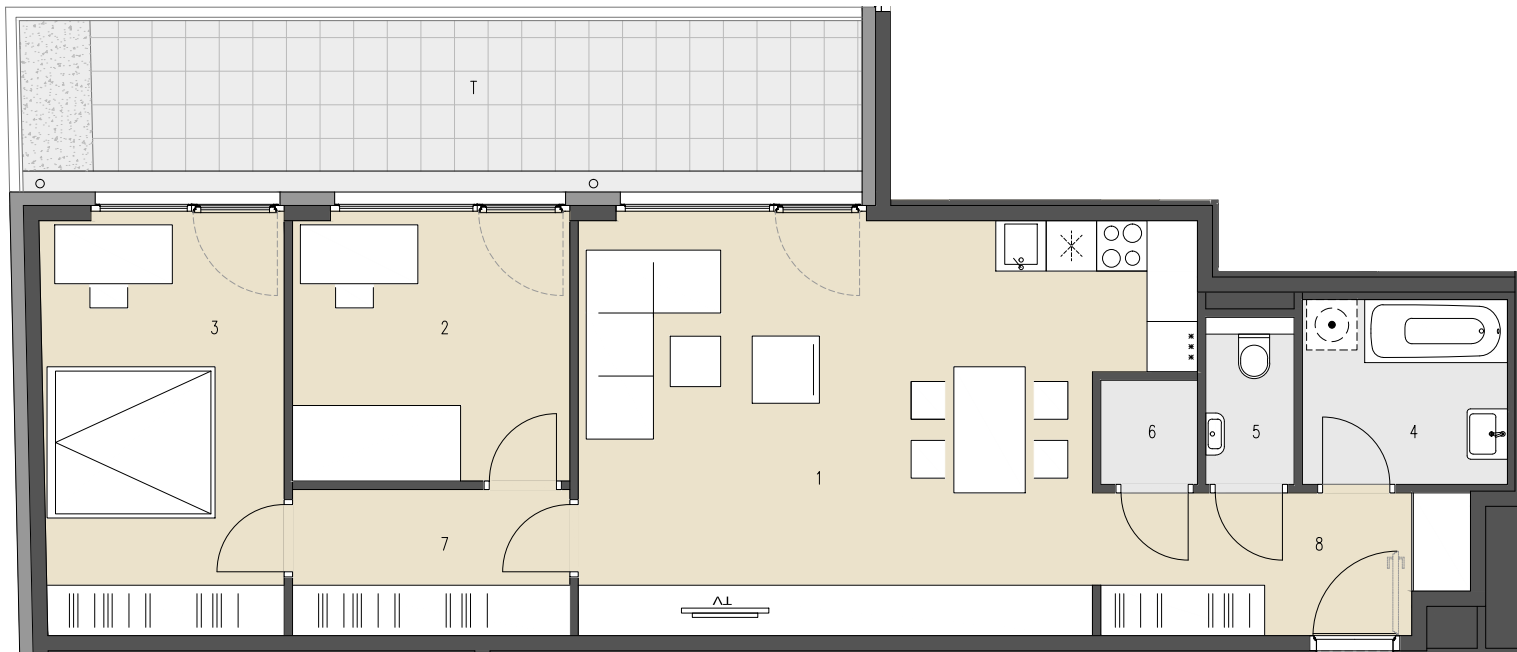
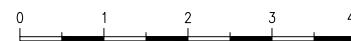
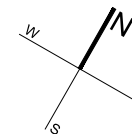


JOSEF-RUSTON-GASSE 28, 1210 WIEN



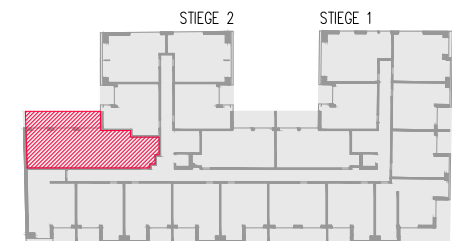
228



**TOP 228** 1. DACHGESCHOSS

WOHNFLÄCHE ca. 78,51 m<sup>2</sup>  
TERRASSE ca. 20,42 m<sup>2</sup>

|   |           |                      |
|---|-----------|----------------------|
| 1 | WOHNKÜCHE | 32,48 m <sup>2</sup> |
| 2 | ZIMMER    | 10,23 m <sup>2</sup> |
| 3 | ZIMMER    | 14,16 m <sup>2</sup> |
| 4 | BAD       | 5,37 m <sup>2</sup>  |
| 5 | WC        | 1,88 m <sup>2</sup>  |
| 6 | AR        | 1,43 m <sup>2</sup>  |
| 7 | VORRAUM   | 5,74 m <sup>2</sup>  |
| 8 | VORRAUM   | 7,22 m <sup>2</sup>  |
| T | TERRASSE  | 20,42 m <sup>2</sup> |



JOSEF-RUSTON-GASSE

ÜBERSICHT - GRUNDRISS